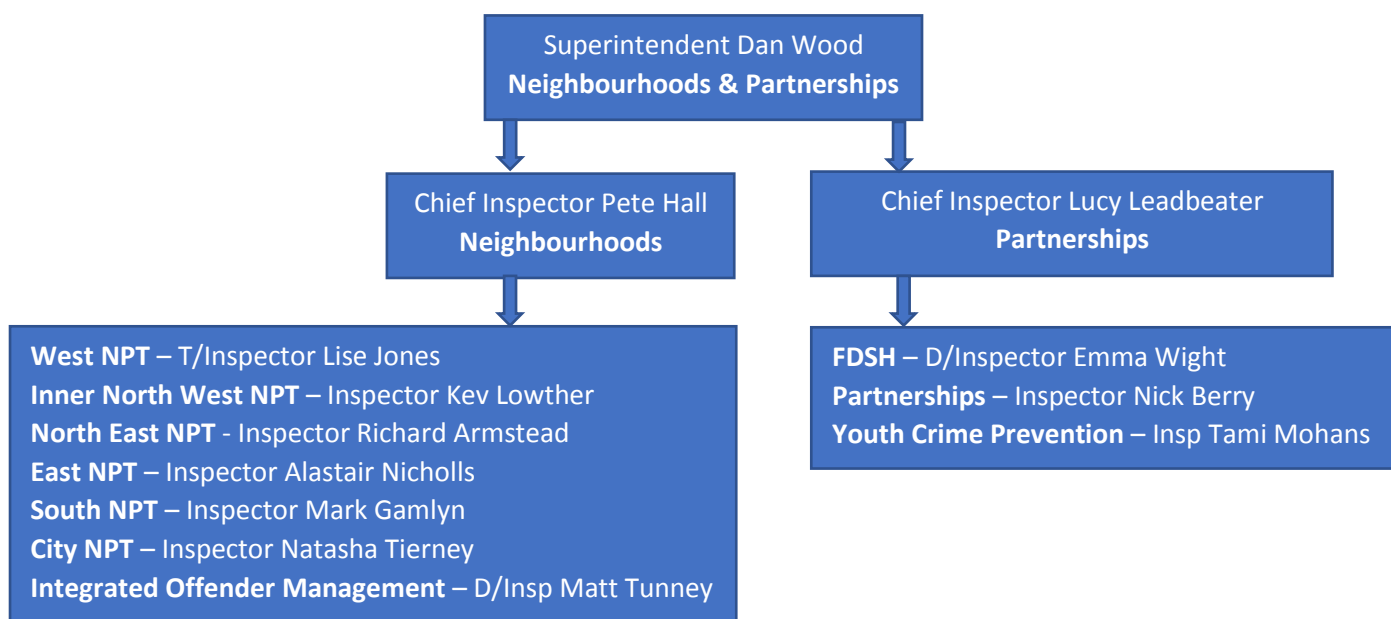


## Leeds police update to Scrutiny Board 2023

The purpose of this report is to provide a short overview to the Board of the current efforts, successes and challenges associated with Leeds District’s Neighbourhood and Partnerships work to support community safety in the city.

### The current policing leadership structure for Neighbourhoods & Partnerships:



### People

I have been in post since February 2022 and have a broad background in neighbourhood and partnership policing. Chief Inspector Pete Hall has been in post since January 2022 so is also firmly established in the neighbourhood’s role. Chief Inspector Lucy Leadbeater took up the Partnerships role in April 2022 and brings with her an extensive experience of both neighbourhood and partnership policing over the past 20 years.

Due to the inevitable progression of some of our most talented staff through promotion, we have seen some recent changes in the Neighbourhood Inspector posts but we are now aiming for a period of stability to build really effective partnership relationships.

It is pleasing to report a recent uplift to the police officer budget (10.34 FTE) which has been divided across neighbourhood teams. It will take a while to realise the recruitment of officers to these new levels, but in time I am sure they will have a positive impact.

We have, and continue to strengthen, an excellent working relationship with the Safer Stronger Communities Team across Neighbourhoods, Safeguarding, Community Safety, Locality Partnerships, Cohesion and Community Relations.

### The current Neighbourhood Policing context

Over the past year we have seen a mixed picture in terms of the crimes recorded that typically most affect neighbourhoods, with some positives but also some ongoing challenges. As can be seen in the table below, the small reduction in Violence with Injury is positive, albeit Most Serious Violence has risen by 8.9%.

Business and Community burglary also decreased, with only a tiny rise in residential burglary (0.4%). Rising volumes of robbery (almost +10%) remain a concern which our District Crime Team are striving to tackle.

Theft of Motor Vehicle is almost static, but we have seen an 11.1% rise in Theft from Motor Vehicle.

Shoplifting levels have risen sharply (+30.6%) and are perhaps linked to cost of living conditions. We strive to focus on the most harmful offenders in this crime type (e.g. 'series' offenders) but the volumes are challenging for our stretched provision at times.

The rise in Arson offences is somewhat unexpected and will be subject of further analysis to understand how we can best address this area with partners.

A rise in Possession of drugs offences is welcome as it is often an indicator of increased police proactivity. Pleasingly, criminal damage, possession of weapons and public order offences are all down.

Recorded crime	12 month comparison		
	12m to Jun 2023	12m to Jun 2022	Variation
<b>Home Office offence categories / sub-categories</b>			
Violence with injury	10,208	10,482	-2.6%
Violence without injury	16,952	16,358	+3.6%
Robbery of personal property	1,222	1,112	+9.9%
Burglary - business and community	1,504	1,665	-9.7%
Burglary - residential	4,315	4,299	+0.4%
Theft of motor vehicle	2,483	2,496	-0.5%
Theft from motor vehicle	3,486	3,138	+11.1%
Shoplifting	8,642	6,618	+30.6%
Arson	593	474	+25.1%
Criminal damage	9,529	9,906	-3.8%
Possession of drugs	2,320	2,183	+6.3%
Possession of weapons	964	969	-0.5%
Public order offences	14,292	15,116	-5.5%
<b>Offence groups</b>			
Most serious violence	825	763	+8.1%
Racially / religiously aggravated offences	1,894	1,966	-3.7%

Away from these core crime types, reports of Anti-Social Behaviour incidents are down 8.4% and reports of Anti-Social / Nuisance motorcycle and Quad riding are down 8.5%.

## Successes / Developments

I have to sought to base these, where relevant, on the priorities outlined in the Safer Stronger Communities Plan.

### ASB and Public Order

A key change over the past 12 months has been the introduction of Solving Problems in Neighbourhoods (SPIN) meetings. These are Superintendent-led meetings every six weeks to drive problem-solving activity in relation to identified locations that emerge from a bespoke analytical product, e.g the apparently most demanding, vulnerable, or harm-causing places / people in that period. Leeds Anti-Social Behaviour Team are a key asset on this meeting, but we involve a missing person coordinator, mental health liaison and domestic abuse integrated offender management colleagues.

This work is backed up by well embedded daily ASVAT reviews, Ward Tasking arrangements and of course working with Community Committees and others. Last year Halton Moor was a clear threat area, but we continue to see an

improving picture there. Operation Digpark saw a large number of persons prosecuted for their role in earlier Bonfire period related disorder and we have followed this up with ongoing proactive work such as drugs warrants and utilising protective community powers.

The previous report highlighted that Hirst's Yard was a significant concern – it is pleasing to report this year that the problem-solving approach which resolved the issues was deemed worthy of an award.

Our Off Road Bike Team has gone from strength to strength with the addition of six dedicated PCSOs. We were the only policing district in West Yorkshire to record a year-on-year decrease in such calls for service recently which is credit to the work of this team.

Parts of east Leeds have been some of our main areas of focus over the past six months. Our dedicated Neighbourhood Team has conducted a host of work in Harehills to make this community safer including executing 31 drugs search warrants and making 35 arrests - part of the 'Clear, Hold and Build' partnership initiative in this area. An area of Seacroft also saw a concerning series of crimes and intimidatory behaviour which we continue to tackle.

### **Domestic Violence and Abuse**

Our Daily Risk Assessment Meeting (DRAM) for domestic abuse which allows the Police, CSWS and an IDVA to meet and discuss the latest cases and risks is now well embedded. We also continue to work with Social Care and other partnership colleagues to develop an automated solution for Operation Encompass so schools can be informed daily of pupils involved in domestic abuse incidents within the previous 24 hours.

Our Front Door Safeguarding Hub has seen a 33% increase in Claire's Law referrals, driven we believe through the increasing recognition on DRAM meetings of the need to be proactive in this regard if we know there has also been domestic abuse with previous partners. Whilst this increased in demand is challenging to administrate, it is of course the right thing to do in order to protect victims and prevent future offences.

We have recently recruited a Detective Constable to a new role – 'Embedding Learning Officer'. She is an officer with extensive experience in Child Safeguarding and will focus on delivering any learning outcomes derived from reviews which are held when a child in Leeds dies or is seriously harmed through abuse or neglect.

In the past year, all frontline officers have received bespoke training based on the Leeds partnership learning that has been obtained from twelve Leeds domestic homicide reviews over the past ten years.

### **Hate Crime**

After a notable rise in hate crimes last year, it is pleasing to be able to report a 3.3% reduction this year. We are investing in a further four Hate Crime Coordination Officers (to take the total of dedicated staff to 7) and changes are being made to ASB Meetings (previously ASB Trigger) to incorporate Hate Crime.

Our Strategic engagement officers continue to work with across partnerships and communities and we continually see evidence that the trust this generates can prevent significant community tensions. We also now have a dedicated Inequalities Officer who is leading on our response to the National Police Race Action Plan.

### **Illicit Drugs and Substance Use**

We continue to utilise custody-based drugs testing and have, over the past year, conducted drugs tests on 2736 arrested detainees. 58% of these tests were positive (cocaine and/or opiates) and result in drugs services referrals and requirements for these individuals.

Our small but dedicated Neighbourhood Improvement Team (NIT), along with the regular NPTs, continues to target drug activity particularly at dealer level – the recent seizure of £4m of drugs in North West Leeds from a suspected

Albanian organised crime group is a good example of our efforts in this regard. The below also illustrates some of the recent results from Operation Bakegreen in Harehills:

- Seized 890 cannabis plants
- Seized 156 wraps / bags of cannabis (varying in size)
- Seized 76 grams of cocaine (worth £7,690)
- Seized 528 grams of ketamine (worth £10,560)
- Seized a number of tramadol and morphine tablets,
- Seized 12kg of bagged cannabis (worth £120,000)
- Seized an amount of methylamphetamine (worth £680),
- Seized £54,000 worth of cash and thousands of pounds worth of jewellery, designer clothing and vehicles under the Proceeds of Crime Act.

## Offending Behaviours

Early Help and Liaison & Diversion are strong, embedded systems that we use to great effect to support and divert offenders and families. We have recently conducted a round of training to frontline officers about how they can refer families into these support services, along with Project Turnaround.

In terms of Integrated Offender Management, our Leeds Reducing Reoffending Board (RROB) has been restructured and re-launched with a number of sub-groups that report into it to work together to tackle issues relating to reoffending.

## Organised Crime and Street Gangs

This has been a priority area over the past 12 months due to continuing concerns in some parts of the city about the associated risks.

Building on our existing framework, (e.g. Serious Organised Crime and Urban Street Gang meetings) we have invested in a dedicated Sergeant to work at the Front Door Safeguarding Hub and coordinate partnership activity. A new Daily Risk Assessment Meeting has been introduced to ensure any emerging incidents of violence or exploitation are appropriately actioned. Furthermore, from September 2023 the city will have a new meeting architecture on a Locality basis to consider cohorts of people thought to be at risk. To support this area, our CID team at Elland Road has assigned a small but dedicated team (Operation Bronzestoke) to maximise investigative opportunities with suspects.

To particularly harness the knowledge and activity of schools in this area, we have developed a Head Teachers working group and submissions of intelligence and information from partners via our Partnership Intelligence Portal continue to rise (280 submissions from April to June 2023 – a 78% increase on the same period last year).

Finally, this area features within our Police Education syllabus which, to date, all but one of the 59 secondary schools in Leeds are signed up to.

## Exploitation and Radicalisation

Leeds has a really strong cohort of 101 Prevent ‘champions’ – officers and staff who are specially trained to understand the signs and vulnerabilities involved with those who may be exploited or radicalised and raise this awareness in the wider network of policing and partners. The champions receive regular inputs and we have just begun using a Teams channel to better understand how we can best support their vital preventative work.

## People with multiple needs

We continue to use Public Protection Notices (PPN) in conjunction with Adult/Child Social Care to provide referrals

for persons in vulnerable situations – recently we have sought to fully expand police and partnership knowledge in this regard to include where risk exists outside the home.

Our dedicated Sex Working Liaison officers continue to work with partners such as Basis and the Joanna Project to safeguard these most vulnerable citizens from harm.

### **Violence and sexual crime**

Gang related violence is an ongoing concern. In response to this, Operation Jemlock is the WYP dedicated resource working pan West Yorkshire in an intelligence led way, with patrols focusing on violent crime hotspots and violent crime offenders engaged with targeted deployments. Frequent tasking includes daily high visibility patrols across the city, supported by the medium to long term efforts described above.

In terms of sexual offences and violence against women and girls, we are working to a Force Strategy. 'Ask Angela and Safe Spaces are examples of initiatives we have adopted in this area.

### **Other challenges / Ongoing efforts**

#### **City Centre**

The city centre can be an attractive environment for some young people to gravitate to, sometimes leading to issues of crime and disorder or a risk of exploitation. Insp Tierney is working closely with partners to strike the right balance for the city in terms of making it a safe place to congregate but also address offending behaviours. The bus station / market has been a recent area of partnership focus and we are hopeful that the growing team of dedicated Safer Travel PCSOs can have a positive impact in the near future.

#### **Miscellaneous**

Due to our Patrol teams needing to train the many new officers recruited under the national Police Uplift Programme, the experience levels are not quite there yet to fill all the officer vacancies on the neighbourhood teams but there are indications we will be able to address this from Autumn onwards.

#### **Missing people (especially under 18)**

We have seen an increase in numbers of young people going missing from care placements, putting themselves at risk of exploitation or harm. Work is being developed with Childrens Social Work Services to manage placements more effectively when a child is in care. Our objective is to have a greater understanding of risk, improve inter-agency communications and focus on emerging threats and early intervention rather than intervening at a later crisis point.

Superintendent Dan Wood  
Neighbourhoods & Partnerships  
Leeds District Police  
04/08/2023